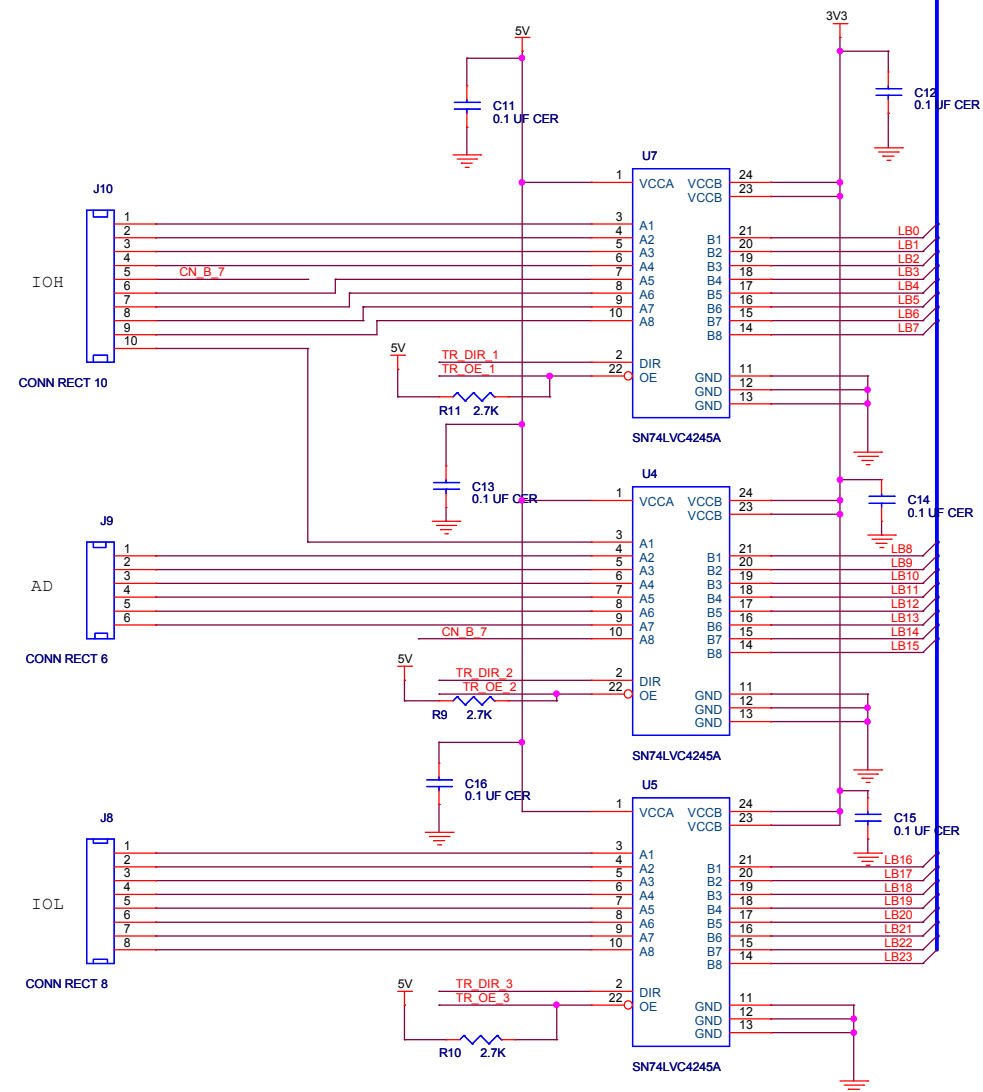
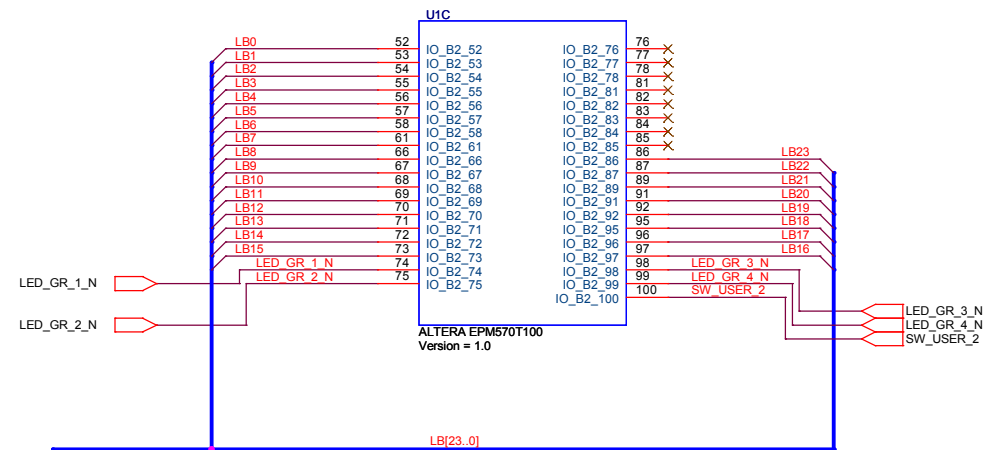
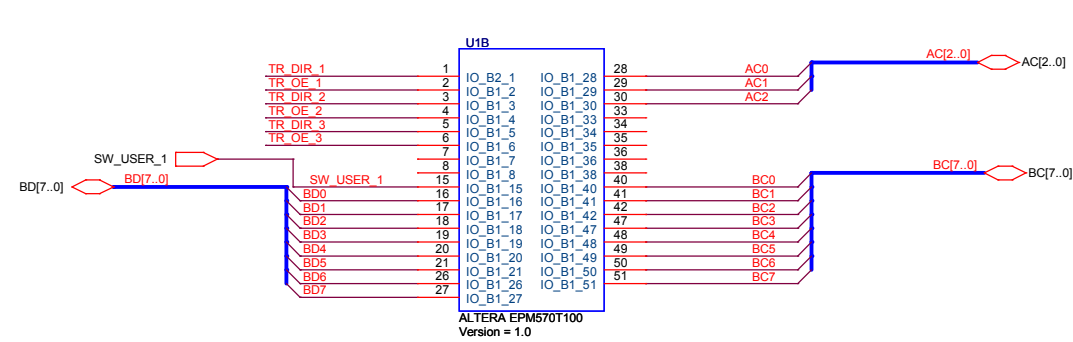
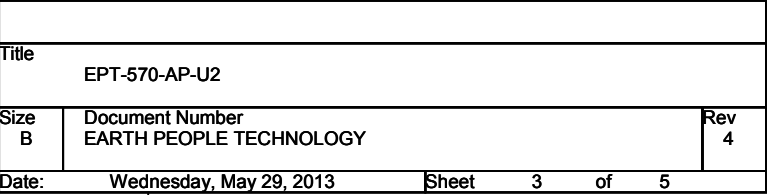
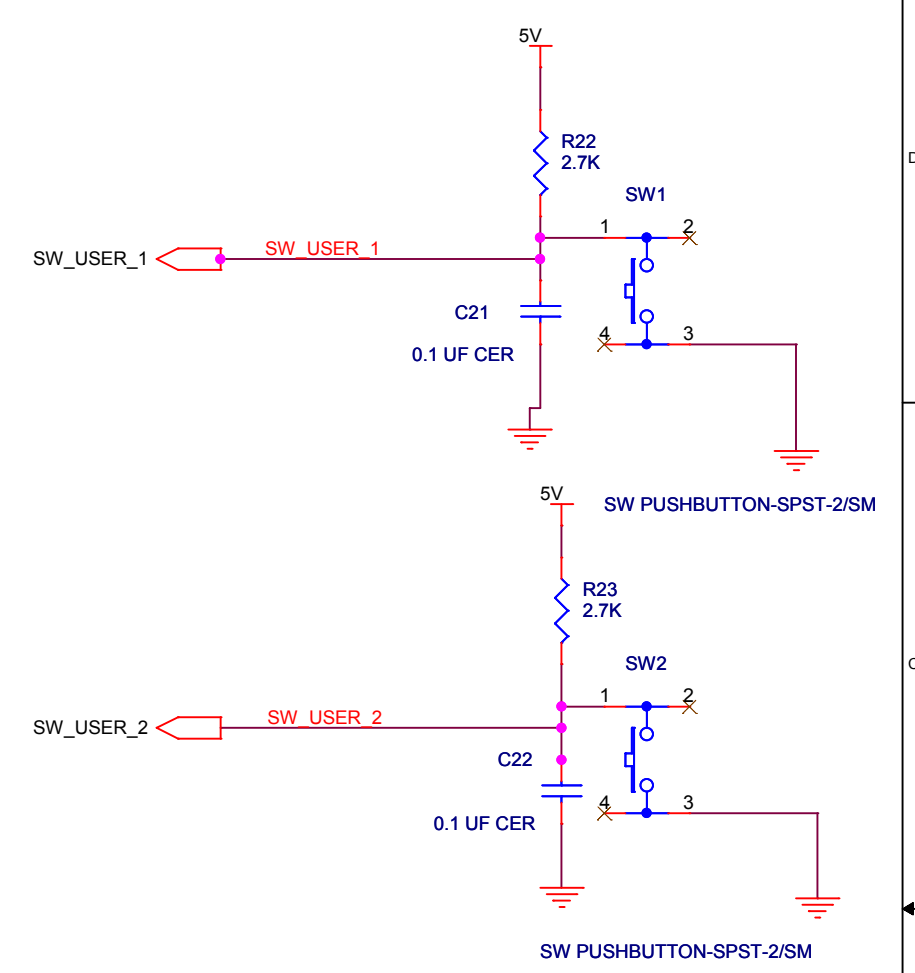
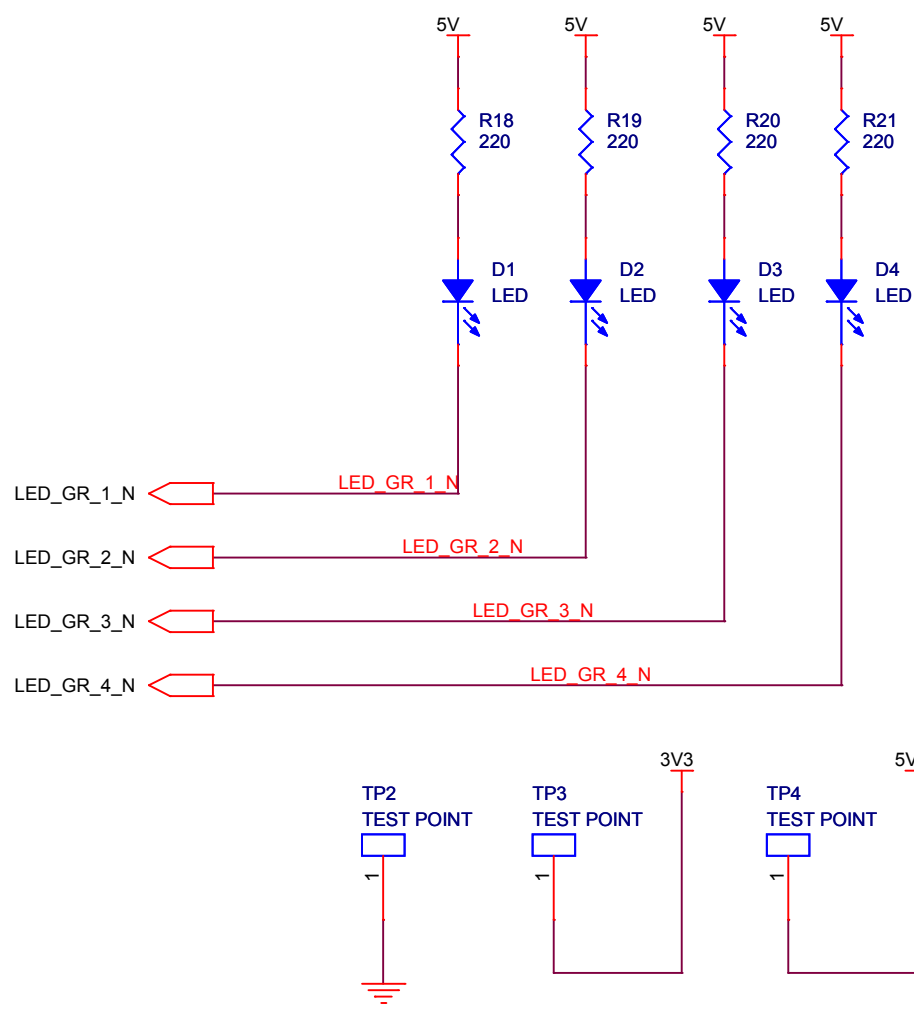
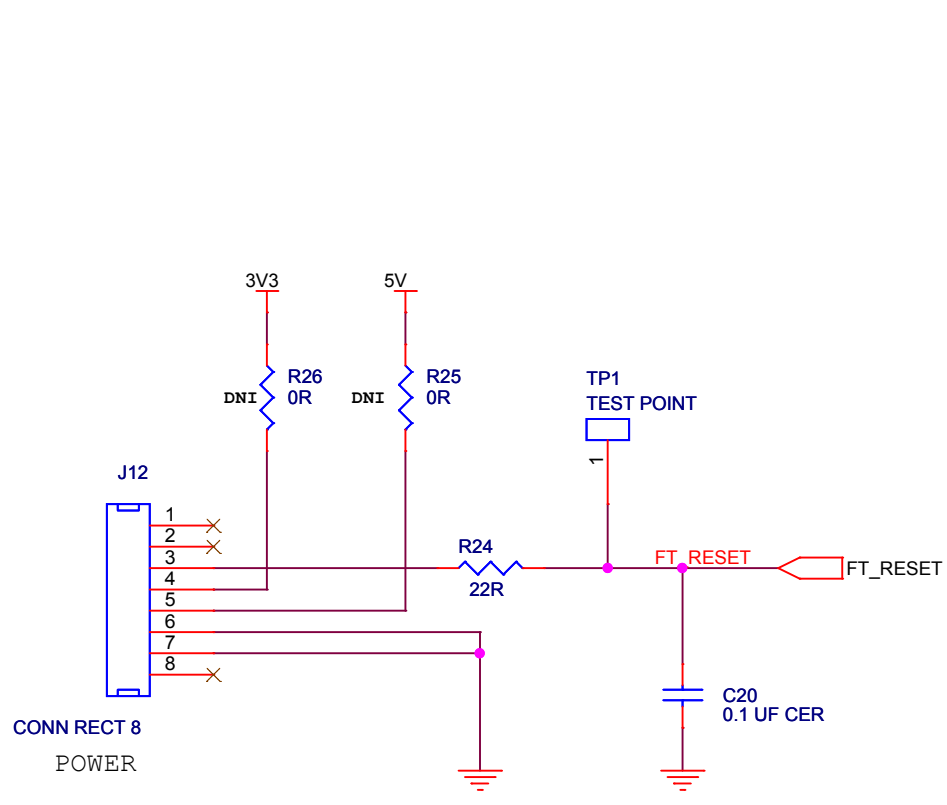


- NOTES
1. TWO LAYER BOARD
 2. GROUND FLOOD ON TOP AND BOTTOM LAYERS
 3. ADD GROUND ISLAND UNDER U6 AND R6
 4. ADD 3V3 ISLAND UNDER U1
 5. C2 THROUGH C10 MUST BE CLOSE TO U1
 6. GCLK1 AND GCLK2 MUST BE THE SAME LENGTH

Title		
EPT-570-AP-U2		
Size	Document Number	Rev
B	EARTH PEOPLE TECHNOLOGY	4
Date:	Wednesday, May 29, 2013	Sheet 1 of 5







Title		
EPT-570-AP-U2		
Size B	Document Number EARTH PEOPLE TECHNOLOGY	Rev 4
Date:	Wednesday, May 29, 2013	Sheet 4 of 5

EPT-570-AP-U2 BILL OF MATERIALS

Item	Quantity	Reference	Part	Description	Manufacturer	Install
1	20	C1,C2,C3,C4,C5,C6,C7,C8,C9,C17,C18,C11,C12,C13,C14,C15,C16,C20,C21,C22	CX0603MRX7R6BB104	0.1 uF Ceramic Cap	Yageo	Yes
2	2	C10, C19	T491B105M035AT	1uF Tantalum Cap	Kemet	Yes
3	4	D1,D2,D3,D4	APT1608CGCK	LED 1.6X0.8MM GRN	Kingbright	Yes
4	2	J1,J2	PPTC132LFBN-RC	CONN SOCKET 13x2	Sullins Connector	Yes
5	2	J8, J12	SSQ-108-03-T-S	CONN SOCKET 8x1	Samtec	Yes
6	1	J11	BM06B-GHS-TBT (LF) (SN) (N)	CONN SOCKE 6x1	Samtec	Yes
7	1	J9	SSQ-106-03-T-S	CONN SOCKET 6x1	Samtec	
8	1	J10	SSQ-110-03-T-S	CONN SOCKET 10x1	Samtec	Yes
9	12	R1,R2,R3,R4,R5,R7,R8,R9,R10, R11,R22,R23	RC0603JR-072K7L	2.7K Reistor 0605	Yageo	Yes
10	8	R6,R12,R13,R14,R15,R16,R17,R24	RC0603JR-0722RL	22R Resistor 0605	Yageo	Yes
11	4	R18,R19,R20,R21	RC0603JR-07220RL	220 Resistor 0603	Yageo	Yes
12	2	R25, R26	RC1206JR-070RL	0.0 Resistor 1206	Yageo	
13	2	SW1,SW2	TL3301AF160QG	SWITCH TACTILE SPST	E-Switch	Yes
14	1	U1	EPM570T100C5N	EPM570 CPLD	Altera	Yes
15	3	U4,U5,U7	SN74LVC4245APWR	Bus Transceiver 245	Texas Instruments	Yes
16	1	U6	CB3LV-3I-66M0000	66 MHz Oscillator	CTS	Yes

Title EPT-570-AP-U2		
Size A	Document Number EARTH PEOPLE TECHNOLOGY	Rev 4
Date:	Wednesday, May 29, 2013	Sheet 5 of 5