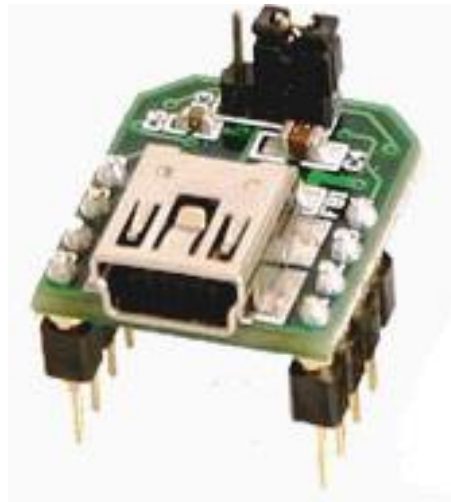


EARTH PEOPLE TECHNOLOGY

VISIPORT USB To Serial Adapter Data Sheet



The VisiPort

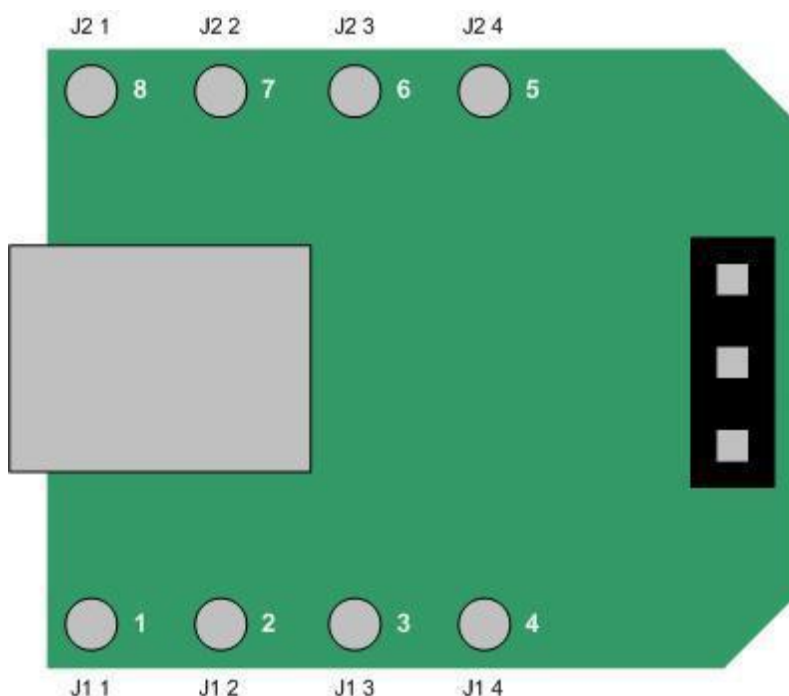
The EPT VisiPort is a USB To Serial Adapter Module. It's designed to be used in debugging microcontroller applications. It's user signal inputs and outputs can be selected between +3.3 Volt and +5 Volt.

The VisiPort is based on the FTDI FT232RQ USB to Serial UART IC which handles all the USB signaling and protocols. The VisiPort supports RTS/CTS hardware handshaking and is USB powered. The module supports data transfer rates from 300 baud to 3 Mbaud.

VisiPort Connection Pin Out

The electrical connections to the VisiPort module are shown in the figure and table below.

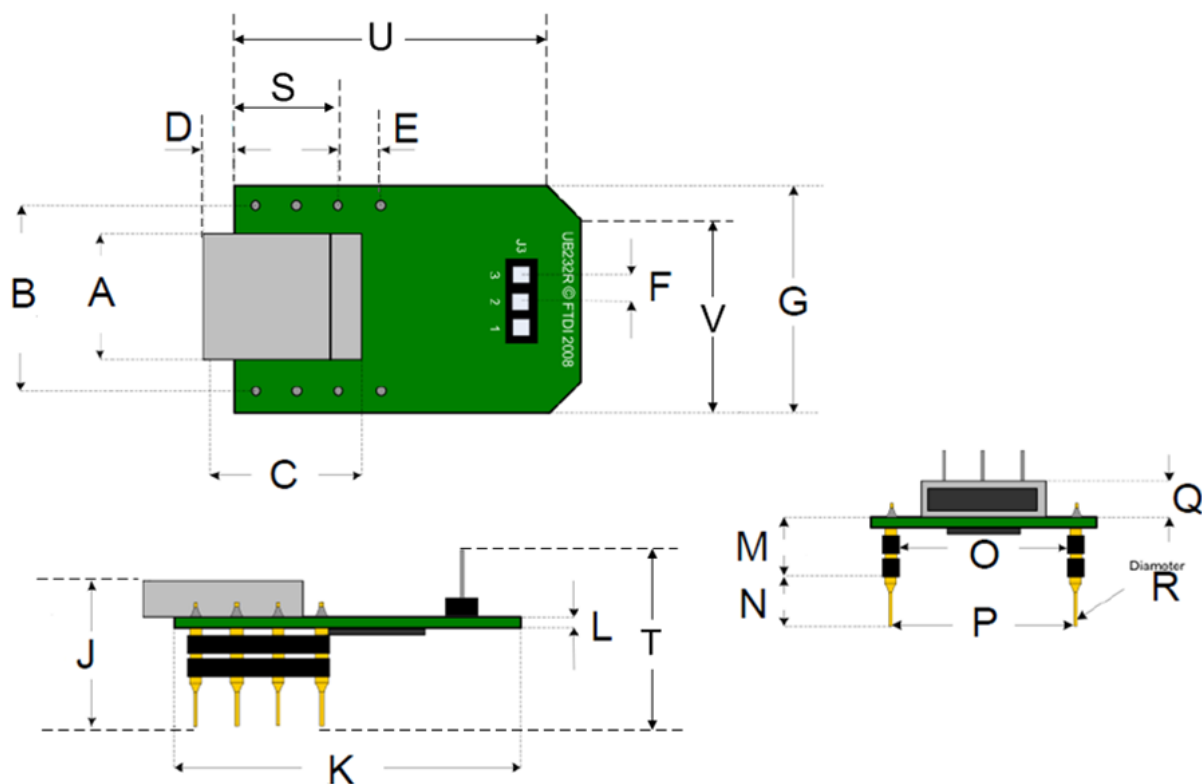
VisiPort Data Sheet USB To Serial Adapter



Silkscreen Pin	Connector Pin	Name	Description
1	J1-1	GND	0V Power Pin
2	J1-2	VCC	+5V Power from USB Interface
3	J1-3	CTS#	FT232R CTS Pin
4	J1-4	RTS#	FT232R RTS Pin
5	J2-4	CBUS1	FT232R CBUS1 Pin
6	J2-3	CBUS0	FT232R CBUS0 Pin
7	J2-2	RXD	FT232R RXD Pin
8	J1-1	TXD	FT232R TXD Pin

Connector J3	Function
Link 1-2 connected	VCCIO and RESET# driven connected to VCC (+5V)
Link 2-3 connected	VCCIO and RESET# driven connected to +3.3V output of FT232R LDO regulator

VisiPort Data Sheet USB To Serial Adapter



	Dimensions (mm)		Dimensions (mm)		Dimensions (mm)		Dimensions (mm)
A	7.0 +/- 0.1	F	2.0 +/- 0.005	M	8.0 +/- 0.1	R	0.5 +/- 0.005
B	12.7 +/- 0.1	G	15.24 +/- 0.2	N	5.0 +/- 0.1	S	6.35 +/- 0.005
C	7.0 +/- 0.1	J	17.0 +/- 0.2	O	10.0 +/- 0.1	T	18.90 +/- 0.005
D	2.0 +/- 0.005	K	17.78 +/- 0.2	P	12.7 +/- 0.1	U	15.24 +/- 0.005
E	2.54 +/- 0.005	L	1.60 +/- 0.005	Q	4.0 +/- 0.1	V	12.70 +/- 0.005